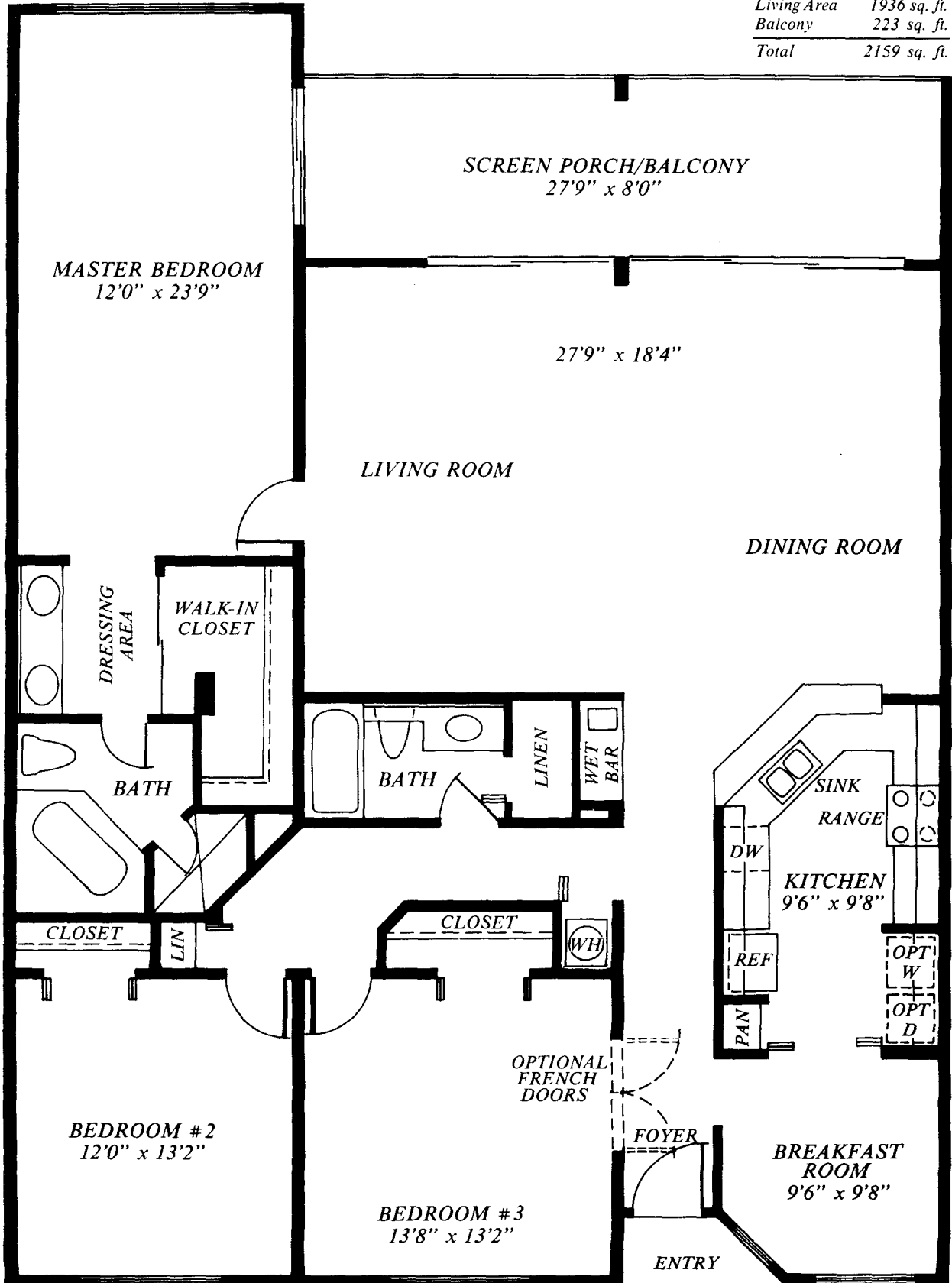


*Pp*  
**Princeton Place**  
 At Wiggins Bay

380 Horsecreek Dr. - Suite #106  
 Naples, FL 33963 (813) 566-1888

**PRINCETON**  
 3 bedroom/2 bath

Living Area	1936 sq. ft.
Balcony	223 sq. ft.
Total	2159 sq. ft.



All dimensions, features and specifications are approximate and subject to change without notice.

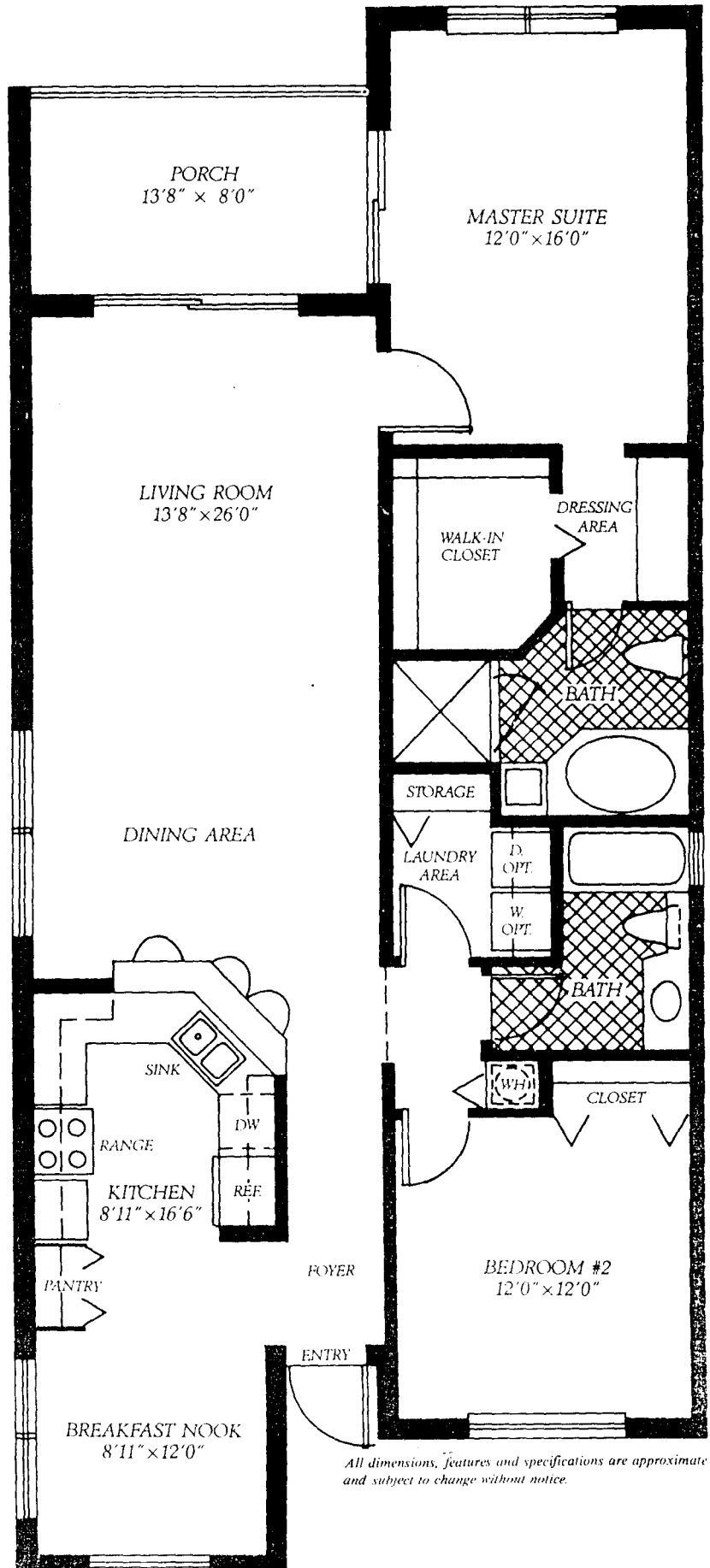
# RIVIERA II

2 bedroom/2 bath

  
**Princeton Place**

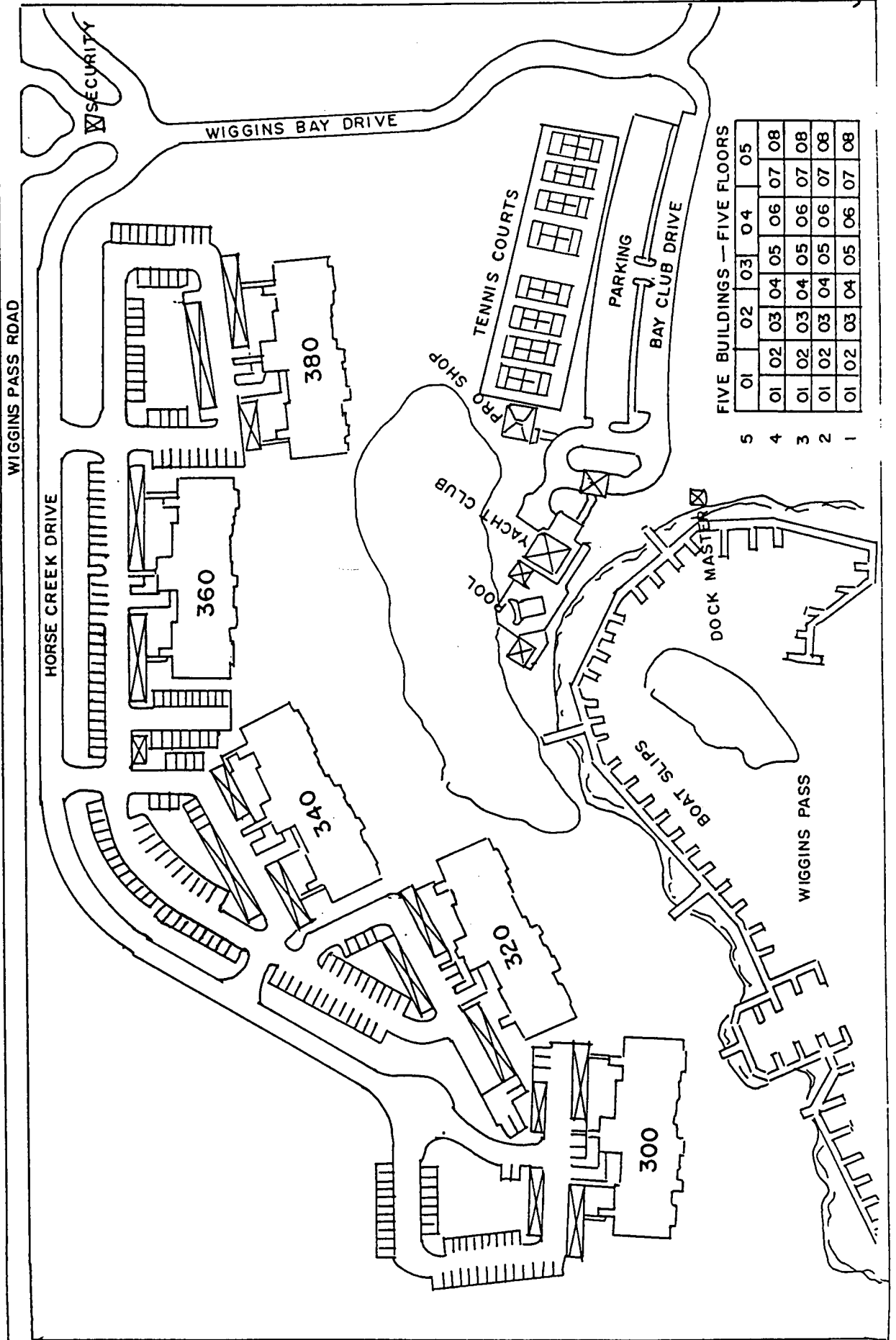
At Wiggins Bay

380 Horsecreek Dr. - Suite #106  
Naples, FL 33963 (813) 566-1888



*All dimensions, features and specifications are approximate and subject to change without notice.*

**PRINCETON PLACE**  
 80 HORSE CREEK DRIVE  
 ZONE I



FIVE BUILDINGS — FIVE FLOORS

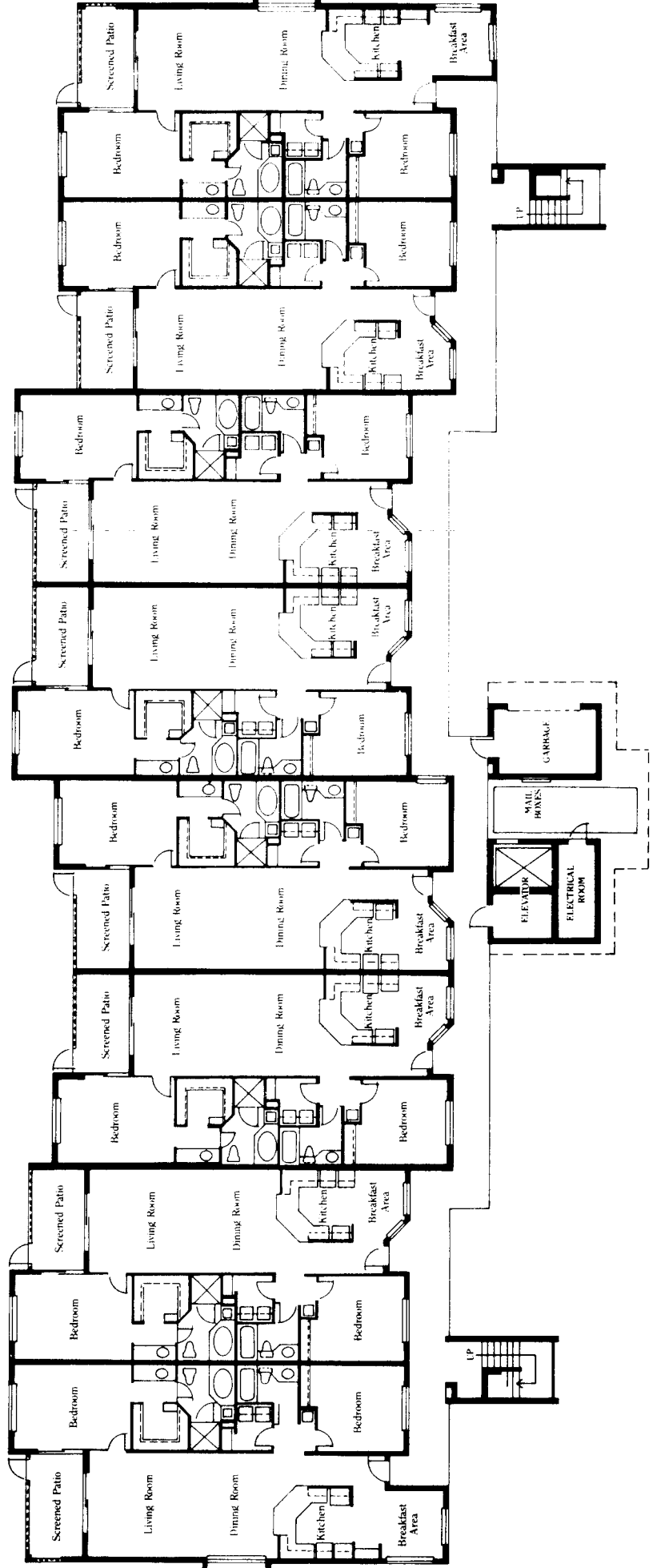
5	01	02	03	04	05
4	01	02	03	04	05
3	01	02	03	04	05
2	01	02	03	04	05
1	01	02	03	04	05

WIGGINS PASS

*Pp*  
**Princeton Place**  
 At Wiggins Bay

380 Horsecreek Dr. - Suite #106  
 Naples, FL 33963 (813) 566-1888

# Typical Building Floorplan Layout



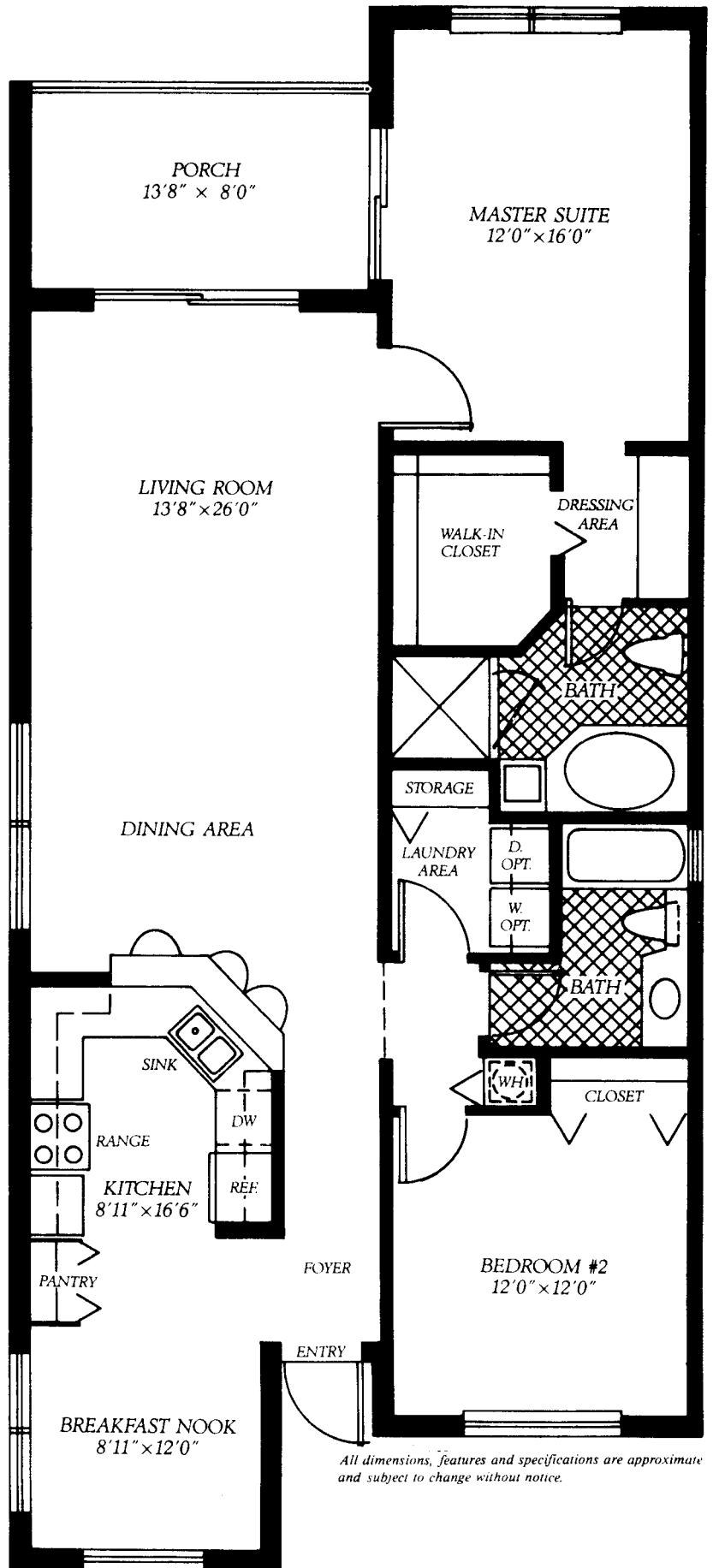
*Pp*  
**Princeton Place**

At Wiggins Bay

380 Horsecreek Dr. - Suite #106  
Naples, FL 33963 (813) 566-1888

# RIVIERA II

2 bedroom/2 bath



*All dimensions, features and specifications are approximate and subject to change without notice.*

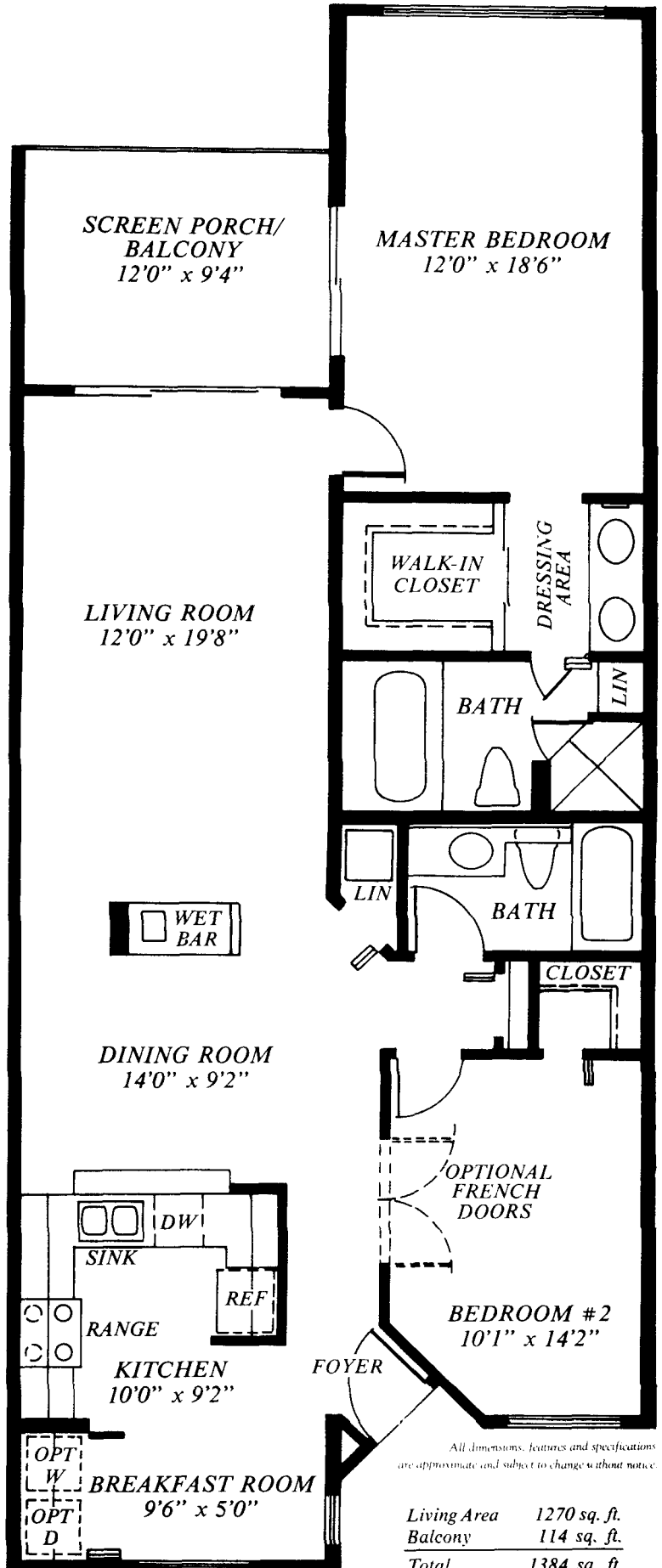
# GRAND RIVIERA

2 bedroom/2 bath

*Pp*  
**Princeton Place**

At Wiggins Bay

380 Hineswood Dr., Suite #106  
 Naples, FL 33963 (813) 566-1888



All dimensions, features and specifications are approximate and subject to change without notice.

Living Area	1270 sq. ft.
Balcony	114 sq. ft.
<b>Total</b>	<b>1384 sq. ft.</b>